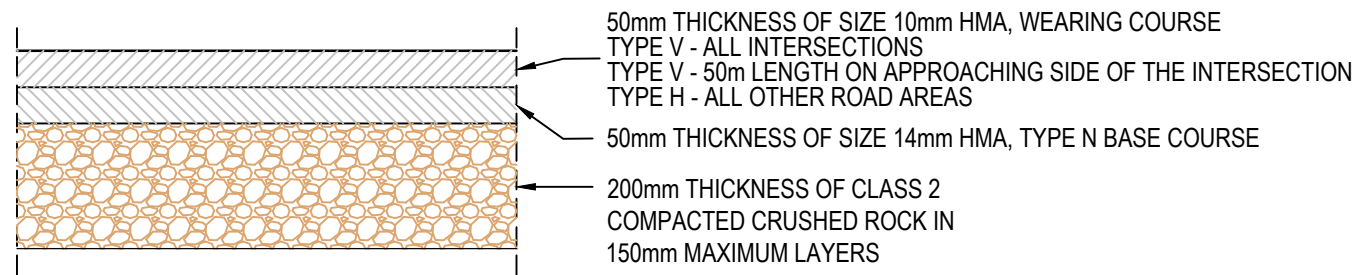


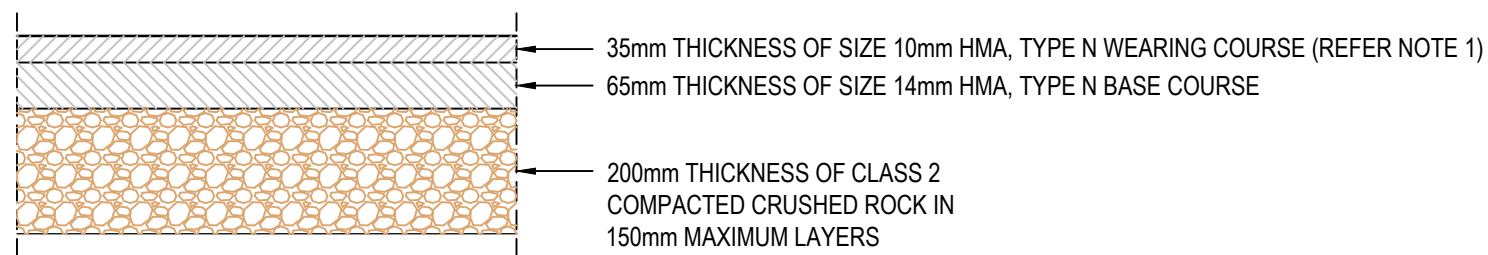
**ALL ROADS WITHIN CBD AND MAJOR ROADS OUTSIDE CBD AS NOMINATED BY COUNCIL**



**DETAIL 1**

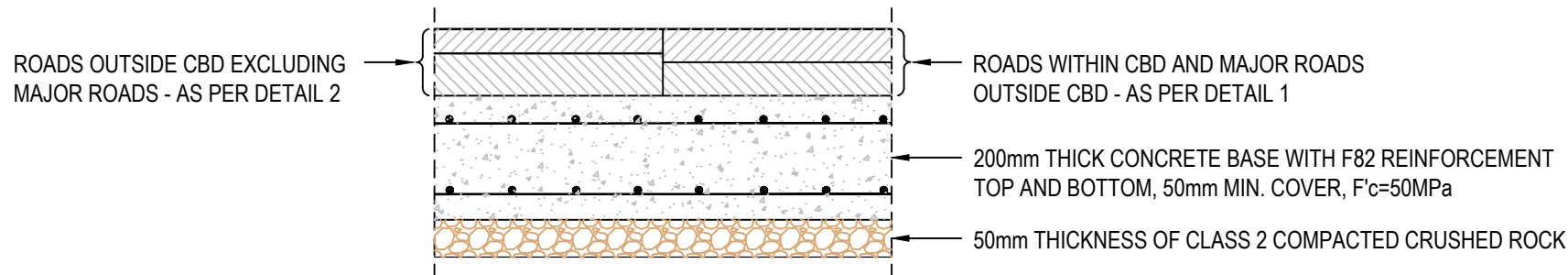
STANDARD ASPHALT ROAD PAVEMENT ON CRUSHED ROCK BASE

**ROADS OUTSIDE CBD EXCLUDING MAJOR ROADS**



**DETAIL 2**

STANDARD ASPHALT ROAD PAVEMENT ON CRUSHED ROCK BASE

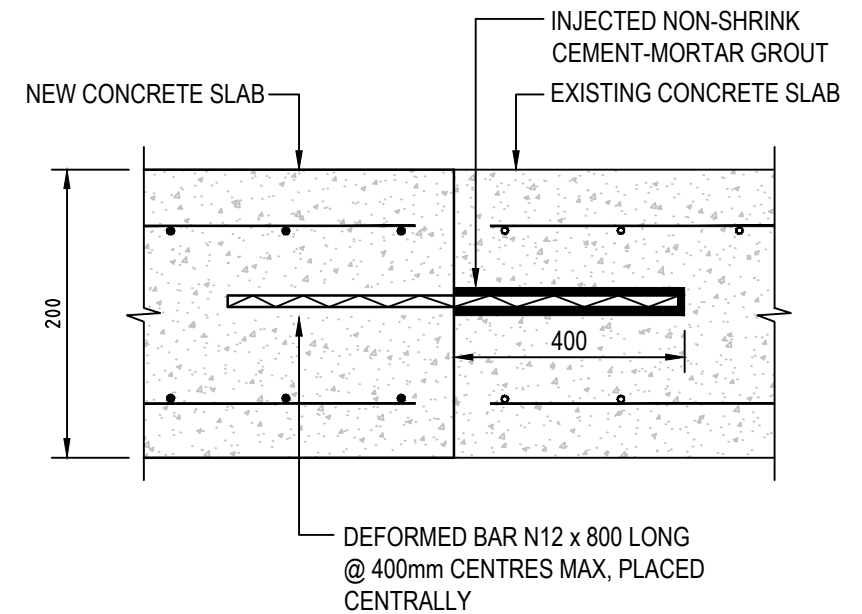


**DETAIL 3**

STANDARD ASPHALT ROAD PAVEMENT ON CONCRETE BASE

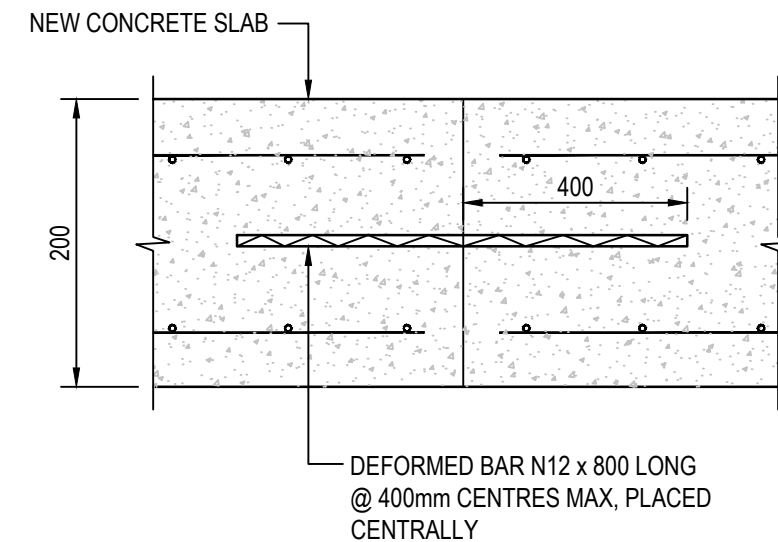
NOTE:

- WHERE LOCAL ROADS ARE IN AN INDUSTRIAL AREA OR REGULARLY TRAFFICKED BY TRUCKS USE TYPE 'H' WEARING COURSE.



**DETAIL 4**

STANDARD CONCRETE ROAD BASE CONNECTION JOINT



**DETAIL 5**

STANDARD CONCRETE ROAD BASE CONSTRUCTION JOINT

NOT TO SCALE



Rev.	Revision Details	By	Date
B	ASPHALT LAYERS TO ROADS WITHIN CBD ADDED		Apr, 19

**ASPHALT ROAD PAVEMENT CONSTRUCTION DETAILS**

**ENGINEERING SERVICES BRANCH**

Approved By		Drawing Number	
Principal Engineer Infrastructure	Manager Engineering Services	1P 50405A	
Date	Date	Revision	B
Jun, 2019	Jun, 2019	Docs	