

LINCOLN SQUARE

Construction update

November - December 2019

Lincoln Square expansion works almost complete

Construction of an expanded Lincoln Square will soon be wrapping up. A significant area of roadway has been converted to public open space, allowing for the installation of new lawn and garden beds, creating space for new trees and providing improved footpaths, bike lanes and lighting.

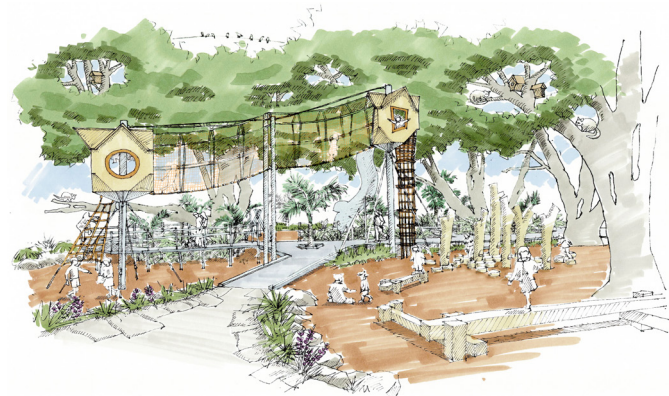
Current works

Works to be carried out in November and December include:

- Installation of new lighting infrastructure
- Pedestrian crossing and bike lane construction
- Footpath construction
- Installation of new park furniture
- Tree and shrub planting
- Laying of new turf
- Installation of new irrigation system.



New footpath construction and tree planting at Lincoln Square



Artist's impression of the new Lincoln Square Play Space to be delivered in 2020

To find out more, please contact **9658 9658**, or visit melbourne.vic.gov.au/cityprojects

Changes to site access during construction:

- The final stage of park expansion works will require sections of Bouverie Street to be closed for short periods while pedestrian crossing line markings occur
- Sections of footpaths adjoining the park will remain fenced off at certain times
- An east-west pedestrian connection through the park will remain open when possible
- Alternative pedestrian connections around the park will be required at different stages
- Footpath construction will be undertaken in stages to minimise disruption.

Public toilet re-opens

The public toilet near the corner of Lincoln Square South and Bouverie Street will remain mostly accessible for the remainder of park construction however will need to be closed for up to three days to allow for footpath works to be carried out.

Changes to public transport in the area

The bus stop located on Bouverie Street that has been temporarily relocated will be moved to its new permanent location on the corner of Bouverie Street and Lincoln Square North.

Changes to parking in the area

Car parking along Lincoln Square North, Lincoln Square South and Bouverie Street will remain limited during construction works and will progressively reopen as works conclude.

Lincoln Square Play Space redevelopment

In 2020, works will commence on the construction of an exciting new Lincoln Square Play Space. More information will become available closer to construction.

We apologise for any inconvenience and thank you for your patience during the park works.